



Mobile cabinet

All your equipment in a mobile cabinet:
Handy. Neat. Ready for use.

[Pricelist](#)

Equipment carts.

D-Series Standard Fitting



Equipment cart D1

Body: 50 cm x 50 cm x 90 cm (w x d x h)
Dimensions with side rail: + 3 cm per side

Two compartment drawers (shallow)

Five cable guides:

Two right, two left, one back

Satin-finish glass door made from tempered safety glass with magnetic locking, one drawer, multiple socket outlet, extension cable with automatic rewind, two stainless steel standard rails mounted right and left, four integrated castors, 360° rotation

Equipment cart D5

Body: 50 cm x 50 cm x 108 cm (w x d x h)
Dimensions with side rail: + 3 cm per side

Three compartment drawers (shallow)

Seven cable guides:

Three right, three left, one back

Art. No.	Description/Scope of delivery	Price €
100101	Equipment cart D1 Worktop: steel in body colour with circumferential stainless steel rail, height difference body with rail: + 3 cm, choice of drawer H3 or H4*	1,990.00
100100	Equipment cart D1 Worktop: mineral composite material in white choice of drawer H3 or H4*	2,050.00
100103	Equipment cart D5 Worktop: steel in body colour with circumferential stainless steel rail, height difference body with circumferential rail: + 3 cm, choice of drawer H3 or H4*	2,250.00
100102	Equipment cart D5 Worktop: mineral composite material in white, choice of drawer H3 or H4*	2,290.00
100110	Additional compartment drawer (shallow) in body colour, also available as retrofit kit	125.00
100111	Additional compartment drawer (deep) in body colour, also available as retrofit kit	125.00
100063	Stainless steel drawer insert 500 H2*, incl. 4 positionable bars	129.00
100064	Stainless steel drawer insert 500 H3*, incl. 4 positionable bars	129.00
100065	Stainless steel drawer insert 500 H4*, incl. 4 positionable bars	129.00
	Additional bar for stainless steel drawer inserts, long or short (price per piece)	16.00
100098	Washable floor insert, fits drawers and compartment drawers	17.00
100115	Worktop mineral composite material, individual color according to sample catalogue	190.00
100009	Individual RAL-colour (includes body, drawers and compartment drawers)	120.00
100045	Personalization: your logo on the glass door, transfer printing approx. 23 cm width, according to customer specifications	95.00

*please refer to section "Drawers" on page 5 for further details

All prices are subject to VAT.

E-Serie

Standard Fitting



Equipment cart E-Series

Body: 42 cm x 50 cm x 90 cm (w x d x h)
Dimensions with side rail: + 3 cm per side

Three compartment drawers: two shallow, one deep

Five cable guides: two right, two left, one back

Satin-finish glass door made from tempered safety glass with magnetic locking, multiple socket outlet, extension cable with automatic rewind, two stainless steel standard rails mounted right and left, four integrated castors, 360° rotation

Art. No.	Description/Scope of delivery	Price €
100201	Equipment cart E1 Worktop: steel in body colour with circumferential stainless steel rail, height difference body with rail: + 3 cm, additional third stainless steel rail mounted in front	1,850.00
100200	Equipment cart E1 Worktop: mineral composite material in white, additional third stainless steel rail mounted in front	1,890.00
100220	Equipment cart E3 Worktop: mineral composite material in white, additional third stainless steel rail mounted in front, Storage compartment under the slidable worktop (only mineral composite material)	2,190.00
100203	Equipment cart E5 Worktop: steel in body colour with circumferential stainless steel rail, height difference body with rail: + 3 cm, one drawer H3*	1,850.00
100202	Equipment cart E5 Worktop: mineral composite material in white, one drawer H3*	1,890.00
100210	Additional compartment drawer (shallow) in body colour, also available as retrofit kit	125.00
100211	Additional compartment drawer (deep) in body colour, also available as retrofit kit	125.00
100060	Stainless steel drawer insert 420 H2*, incl. 4 positionable bars	129.00
100061	Stainless steel drawer insert 420 H23, incl. 4 positionable bars	129.00
100090	Set of four stainless steel bars for storage compartment E3	69.00
	Additional bar for stainless steel drawer inserts, long or short (price per piece)	16.00
100098	Washable floor insert, fits drawers and compartment drawers	17.00
100115	Worktop mineral composite material, individual color according to sample catalogue	190.00
100009	Individual RAL-colour (includes body, drawers and compartment drawers)	120.00
100045	Personalization: your logo on the glass door, transfer printing approx. 23 cm width, according to customer specifications	95.00

*please refer to section "Drawers" on page 5 for further details

All prices are subject to VAT.

Equipment cart.

P-Series Standard Fitting



Equipment cart P1

Body: 42 cm x 50 cm x 90 cm (wxdxh)
Dimensions with side rail: + 3 cm per side

Satin-finish glas door made from tempered safety glass with magnetic locking, one compartment drawer (shallow), multiple socket outlet, extension cable with automatic rewind, four integrated castors, 360° rotation

Equipment cart P3

Body: 42 cm x 50 cm x 80 cm (wxdxh)
Dimensions with side rail: + 3 cm per side

Art. No.	Description/Scope of delivery	Price €
100420	Equipment cart P1 Worktop: steel in body colour with circumferential stainless steel rail, height difference body with rail: + 3 cm, two drawers H3, one drawer H6*	1,650.00
100421	Equipment cart P1 Worktop: mineral composite material in white two drawers H3, one drawer H6*	1,690.00
100450	Equipment cart P3 Worktop: steel in body colour with circumferential stainless steel rail, height difference body with rail: + 3 cm, one drawer H3, one drawer H6*	1,490.00
100452	Equipment cart P3 Worktop: mineral composite material in white one drawer H3, one drawer H6*	1,530.00
100453	Equipment cart P3 Worktop: steel in body colour with circumferential stainless steel rail, height difference body with rail: + 3 cm, three drawers H3*	1,550.00
100454	Equipment cart P3 Worktop: mineral composite material in white three drawers H3*	1,590.00
100011	Standard rail conversion kit: one cable guide + one stainless steel standard rail mounted right or left	160.00
100012	Standard rail conversion kit: two cable guides + two stainless steel standard rails mounted right and left	220.00
100098	Washable floor insert, fits drawers and compartment drawers	17.00
100018	Holder for dispenser, suitable for up to three dispensing guns, as tabletop or wall-mounted version	155.00
100115	Worktop mineral composite material, individual color according to sample catalogue	190.00
100009	Individual RAL-colour (includes body, drawers and compartment drawers)	120.00
100045	Personalization: your logo on the glass door, transfer printing approx. 23 cm width, according to customer specifications	95.00

*please refer to section "Drawers" on page 5 for further details

All prices are subject to VAT.



S-Series Standard Fitting

S1

Body: 50 cm x 50 cm x 90 cm (wxdxh)

Body without drawers, 4x integrated castors, 360° rotation

Choose your individual combination of drawers from 5 heights (see "Drawers" below)

S3

Body: 42 cm x 50 cm x 90 cm (wxdxh)

S5

Body: 42 cm x 50 cm x 80 cm (wxdxh)

Art. No.	Description/Scope of delivery	Price €
100401	Equipment cart S1 height units (H): 24 Worktop: steel in body colour with circumferential stainless steel rail, height difference body with rail: + 3 cm	950.00
100400	Equipment cart S1 Worktop: mineral composite material in white	990.00
100403	Equipment cart S3 height units (H): 24 Worktop: steel in body colour with circumferential stainless steel rail, height difference body with rail: + 3 cm	910.00
100404	Equipment cart S3 Worktop: mineral composite material in white	950.00
100405	Equipment cart S5 height units (H): 21 Worktop: steel in body colour with circumferential stainless steel rail, height difference body with rail: + 3 cm	850.00
100406	Equipment cart S5 Worktop: mineral composite material in white	890.00
100407	Dust sealing lips compliant with Robert Koch-Institut (RKI)	130.00
	Stainless steel drawer insert 420/500 H2*, incl. 4 positionable bars	129.00
	Stainless steel drawer insert 420/500 H3*, incl. 4 positionable bars	129.00
	Stainless steel drawer insert 420/500 H4*, incl. 4 positionable bars	129.00
	Additional bar for stainless steel drawer inserts, long or short (price per piece)	16.00
100098	Washable floor insert, fits drawers and compartment drawers	17.00
100009	Individual RAL-colour (includes body, drawers and compartment drawers)	120.00

*please refer to section "Drawers" below

Drawers

Choose and combine from a variety of 5 heights from H2 to H6! A total of 24 height units (H) are available for Model S1 and S3, 21 units for Model S5. All S-Series drawers are fully extractable.

Height units	H2	H3	H4	H5	H6	75.00 each
Height inside in mm	34	66	98	130	162	
Height front in mm	61	93	125	157	189	

e.g. 4 x H3 + 2 x H4 + 2 x H2 = 24 height units

All prices are subject to VAT.

Instrument table

Standard Fitting



Instrument table I1

Instruments table steplessly height-adjustable from 78 to 120 cm
 Worktop: 65 cm x 45 cm polished stainless steel, body made from powder-coated steel,
 Four integrated castors, 360° rotation

Art. No.	Description/Scope of delivery	Price €
100350	Instrument table I1 Without stainless steel standard rail	790.00
100351	Instrument table I1 Incl. stainless steel standard rail for mounting accessories	850.00
100053	Cup holder for standard cups, hangs on standard rail or small stainless steel tray	35.00
100017	Waste bin , frame stainless steel, incl. hanging device for standard rail	95.00
100009	Individual RAL-colour for body	90.00

All prices are subject to VAT.

Information

Colours

All equipment carts and instruments tables are powder coated in Traffic White RAL 9016 unless ordered otherwise. Aluminum Silver RAL 9006 is available at no extra cost.

Special colours

Powder-coating is available in all RAL colours. The surcharge for equipment carts is 120.00 € and includes components such as drawers, compartment drawers and frames. The surcharge for instruments tables is 90.00 €. When ordering several carts or instrument tables in one order, the surcharge will be charged only once. In the case of colour combinations (e.g. different colours for body and drawers) an individual offer will be submitted.

Power Supply

Our mobile equipment carts D, E and P series are equipped with an integrated power supply. This includes a multi-way socket integrated into the interior back wall. The power connection is made by means of an extension cable with automatic rewind with approximately 300 cm cable length.

The internal sockets are in accordance with the European Norm (Schuko). For deliveries to Switzerland or England, these are supplied in accordance with the country code (main line via adapter, which is included).

Doors

The doors of our equipment carts are manufactured as standard in satin-finished tempered safety glass. Upon request, doors

made from aluminium in your preferred RAL colour are also possible.

Shipping costs

Shipping costs upon request.

General

All prices stated in Euro plus VAT. All our equipment carts are preassembled. Invoice amounts are due 10 days from the date of invoice without deduction. Illustrations and information in brochures and price lists are for guidance only. Modifications and errors reserved.

General Terms and Conditions of DEMED Dental Medizintechnik e.K. apply see pages 10–11.

Accessories.



Accessories.

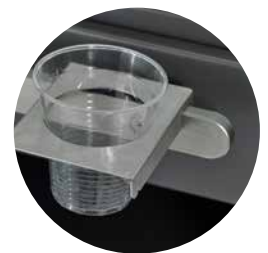


Holders for hand and angle pieces

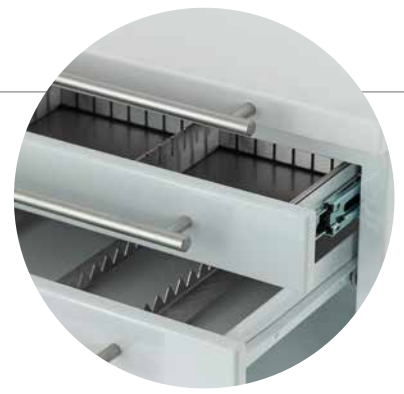
Our holders are made of POM (polyoxymethylene, a thermoplastic polymer) and are available in all typical sizes for hand- and anglepieces. They fit on the standard rails and can be sterilized in a thermal disinfectant. The stainless steel inlays are blasted by MPG, giving them a durable and matt texture.

Art. No.	Description/Scope of delivery	Price €
100030	Holder with stainless steel inlay Ø22/26 , suitable for implant and endo motor, autoclavable, fits standard rail	135.00
100031	Holder with stainless steel inlay Ø18/22 , suitable for endomotor, autoclavable, fits standard rail	135.00
10003-x	POM Hand and angle handpiece holder without stainless steel inlay, available in sizes: Ø12/15/18/22 mm	110.00
100043	POM Holder for Obtura , positionable, rotatable top plate	160.00
100037	Endodontics holder set: POM holders 1 x Ø18 mm, 1 x Ø22 mm, 1x holder with stainless steel inlay Ø22/26 mm	325.00
100038	Implant holder set: 1x holder for cooling fluid, 1x holder with stainless steel inlay Ø22/26 mm, stainless steel boom	225.00
100039	Holder for laser: two supports in one holder Ø10 mm + Ø12 mm	160.00
100042	Holder in special sizes , manufactured according to customer specifications (max. size standard holder 30 mm)	160.00
100021	Holder for stainless steel boom , fits standard rail	110.00
100020	Stainless steel boom: holds infusion bottle/cooling fluid	35.00
100018	Holder for Dispenser: suitable for up to three dispensing guns, as tabletop or wall-mounted version	155.00
100050	Extension for spray hose: 10 pcs. individually packed and sterilized (for extending the existing spray hose NaCl)	upon request
100051	Extension for spray hose: 25 pcs. individually packed and sterilized (for extending the existing spray hose NaCl)	upon request

Accessories for standard rail and mobile equipment carts



Art. No.	Description/Scope of delivery	Price €
100014	Holder for footswitch: baseplate with clip, aluminium, white, small (for one footswitch)	105.00
100019	Holder for footswitch: baseplate with clip, aluminium, white, round (for one footswitch, e.g. Piezotome)	105.00
100015	Holder for footswitch: baseplate with clip, aluminium, white, large (for up to three footswitches)	120.00
100052	Small add-on tray for accessories and equipment, can be easily and handily hung from the standard rail	75.00
100053	Cup holder for standard cups, hangs on standard rail or small stainless steel tray	35.00
100017	Waste bin , frame stainless steel, incl. hanging device for standard rail	95.00
100010	Standard rail: stainless steel, 300 mm, incl. spacer and stainless steel bolts M6	120.00



Drawer inserts and extensions

Art. No.	Description/Scope of delivery	Price €
100060	Stainless steel drawer insert 420 H2 incl. 4 positionable bars (fits all bodies with 42 cm width)	129.00
100061	Stainless steel drawer insert 420 H3 incl. 4 positionable bars (fits all bodies with 42 cm width)	129.00
100062	Stainless steel drawer insert 420 H4 incl. 4 positionable bars (fits all bodies with 42 cm width)	129.00
100063	Stainless steel drawer insert 500 H2 incl. 4 positionable bars (fits all bodies with 42 cm width)	129.00
100064	Stainless steel drawer insert 500 H4 incl. 4 positionable bars (fits all bodies with 42 cm width)	129.00
100065	Stainless steel drawer insert 500 H4 incl. 4 positionable bars (fits all bodies with 42 cm width)	129.00
100090	Set of four stainless steel bars for storage compartment E3	69.00
	Additional bar for stainless steel drawer inserts, long or short (price per piece)	16.00
100055	Instrument holder 420 incl. 2 positionable bars: max. 26 items (fits all bodies with 42 cm width)	39.00
100056	Instrument holder 500 incl. 4 positionable bars: max. 52 items (fits all bodies with 52 cm width)	49.00
100110	Additional compartment drawer 500 shallow	125.00
100111	Additional compartment drawer 500 deep	125.00
100210	Additional compartment drawer 420 shallow	125.00
100211	Additional compartment drawer 420 deep	125.00
100115	Worktop mineral composite material , individual color according to sample catalogue	190.00
100097	Washable floor insert , fits all bodies with 42 cm width	17.00
100098	Washable floor insert , fits all bodies with 50 cm width	17.00
100099	Washable floor insert , fits storage compartment E3	17.00
100045	Personalization: your logo on the glass door, transfer printing approx. 23 cm width, according to customer specifications	95.00

All prices are subject to VAT.

Shipping costs

Shipping costs upon request.

General Terms and Conditions of Business

1. Scope of terms

- a) Deliveries, services and offers from the seller all fall under the exclusive conditions of these General Terms and Conditions of Business (GTCB). These also apply for future business relationships even if not explicitly agreed. At the latest when the goods or services are received the terms of this document will be considered as accepted. Limited acceptance from customers who point to their own GTCB will not be accepted by us.
- b) All agreements made between the seller and the customer concerning the application of these GTCB's are to be in writing.

2. Quotes and contract conclusion

- a) In case customer's order qualifies for an offer to purchase, we are entitled to accept this offer. Such acceptance can also be conveyed implicitly by executing shipment of the ordered products. An offer from our side is generally deemed to be non-binding as long as it has not explicitly been denoted in writing by the seller as binding.
- b) Drawings, illustrations, dimensions and other specifications are only binding if explicitly agreed in writing.
- c) Employees of the seller are not authorized to make verbal additional agreements or other agreements in writing concerning the contents of this contract.

3. Prices

- a) If not otherwise stated, prices offered by the seller are binding for a period of 30 days after the quote has been issued. Otherwise conclusive are the conditions noted in the order confirmation from the seller which include valid prices and VAT. Additional deliveries and services will be treated separately.
- b) Prices are unless otherwise agreed exclusively in Euro and excluding VAT, packaging, freight, postage and insurance.

4. Delivery and time of performance

- a) Delivery dates or deadlines are to be agreed upon in writing.
- b) Delivery and performance delays resulting from circumstances beyond our control (acts of god) including strike,

lock out, authority orders etc. which lead to deliveries becoming extremely difficult or impossible, including such with suppliers and sub-suppliers are not the responsibility of the seller in cases where delivery dates have been bindingly conveyed. In such cases the seller is eligible to delay deliveries and services for the duration of such occurrences plus an adequate starting-up time. The seller is also entitled to stand down from parts of or the whole contract.

- c) If the delay continues for a period longer than three months then the customer is entitled (having given an adequate additional respite) to stand down from parts of or the whole contract. In cases where delivery times are prolonged or the seller is freed from the contract then the customer is not eligible to claim compensation of any kind from the seller. Such claims will only be possible if the customer informs the seller immediately.
- d) If the seller can foresee that a delivery delay will happen then he will inform the customer without undue delay. He will inform the customer of the reasons for the delay and offer an estimated delivery date.
- e) The seller is entitled to deliver goods and services partially at all times other than in cases where this renders the contract uninteresting for the customer.
- f) The adherence of all of the sellers' obligations is dependent upon the customer fulfilling his obligations.
- g) In cases where the customer does not fulfil his obligations then the seller is eligible to claim compensation for damages from the customer, with the upcoming of non-fulfilment on the customer's part all risks of downfall are conveyed to the customer.

5. Transfer of risks

- a) All risks are transferred to the customer as soon as the goods have been handed over to the conveyor or been taken out of the seller's stock for dispatch. If dispatch is delayed upon the wish of the customer then risks are transferred from the moment of notification of delay.

6. Customer rights due to defects

- a) All products are delivered free of manufacturing and material defects.

The enforcement period for complaints in cases of manufacturing or material defects is one year from date of delivery.

- b) If the seller's operation- or maintenance instructions are not adhered to, alterations, modifications are carried out, non-original spare parts or consumables are used by the customer then the seller's/manufacture's warranty will become automatically void. It is the responsibility of the customer to provide substantial evidence that none of these have led to a manufacturing or material defect.
- c) The customer must relay information in writing about discovered defects without undue delay to the seller, at the latest one week after the delivery has been received. Defects which could not be found with a careful check and within this period must be conveyed to the seller in writing as soon as these have been found.
- d) In cases where a customer finds a defective product then the seller has the right to (at his own expense) choose one of the following:
 - The defective product/appliance be repaired and subsequently sent back to the customer
 - The customer holds the product/appliance ready for repair through a service technician sent by the seller. Should the customer demand that repairs be carried out at a particular place then the seller has the right to accommodate whereby spare parts will not be charged. Labour-time and travel expenses however are to be paid by the customer.
- e) Should repairs after an adequate time fail then the customer may choose between, price reduction, refund or he may stand down from the contract.
- f) Liability for normal wear and tear excluded.
- g) Claims due to defects through the customer against the seller are not transferable to third parties.

7. Retention of ownership

- a) Until all present and future demands against the customer (including account balance and current account), which the seller has obtained through lawful events are cleared the seller will receive following securities which he may upon

demand free should the value of the demands be more than 20%.

- b) The goods will remain property of the seller. Processing or transformation is always carried out for the seller as a manufacturer but without any commitment for him. Should the (co-) ownership expire through conjunction then it will be now agreed, that the (co-) ownership of the customer of the goods will lead to the invoice value being carried over to the seller. The customer takes care of the (co-) owned goods at his own expense. Goods upon which the seller has a co-ownership will be designated as conditional goods.
- c) The customer has the right to process and deal with conditional goods as long as he is not in arrears. Neither the pledging to third parties nor security transfer is allowed. The customer pledges herewith all demands on the sales he has initiated legally or otherwise (illegally, from insurance claims), in full to the seller. The customer authorizes (revocable) the seller to draw in all demands under the customer's name in his own name. This authorization may only be withdrawn when the customer does not fulfil his obligations.
- d) In cases when 3rd parties wish to take possession of the goods, in particular in garnishments, then the customer will make clear to the appropriate person that the goods are not his property and will contact the seller without undue delay so that he be in a position to care for his interests. The customers will be liable for all costs which arise in such cases.
- e) Should the customer behave in a manner contrary to the contract (in particular arrears) then the seller is entitled to back down from the contract and redeem all goods.

8. Payment

- a) If not otherwise stated then all invoices from the seller are to be paid in 10 days without deductions. The seller is entitled, despite otherwise provided for the buyer, payments first to offset to earlier debts and will inform the buyer about the type of settlement. If costs and interest have already been incurred, the seller is entitled the payment first to the costs, then the interest and finally to be counted to the main performance.
- b) The seller is entitled to use payments to settle older bills where and when appli-

able regardless of other regulations. In such cases the customer will be duly informed.

- c) Should costs and interest already have arisen then the seller is entitled to deduct firstly the costs, then the interest and finally the main costs for the order.
- d) Payments are considered as complete only when the seller can actually dispose of it. In cases where payment is carried out by cheque then payment is complete when the cheque has been successfully cashed in.
- e) In the event that the customer comes into arrears then the seller shall be entitled, from the moment the arrears begin to claim interest of 12.5 percent above the basic interest rate as compensation. These will be reduced respectively should the customer prove that the actual damages are less than those stated by the seller. The seller is entitled to provide evidence of higher damages.
- f) Should the seller receive knowledge about circumstances which put the credibility of the customer at question, in particular bounced cheques of payment refusal then the seller may demand immediate payment of the full sum in question even when he has taken cheques from the customer. In this case the seller is entitled to ask for advance payment (in part or full) or securities.
- g) The customer may only offset, hold back or reduce payments when the circumstances have been accredited or are obviously indisputable. The seller is entitled to retention in cases of demands compatible with the contract.

9. Design changes

The seller reserves the right to change the design of products at any time. He is not obliged to carry out such changes on products which are already in use.

10. Liability

- a) Liability claims are independent from the nature of the breach, including illegal actions providing these have not been conducted willingly or through gross neglect.
- b) In cases of breach of contract the seller is liable for every neglect, but only up to a predictable damage limit. Claims for loss of profit, expenses deriving from claims of 3rd parties along with indirect damages are excluded and may not be claimed unless the seller has guaranteed that particular properties have been

found to protect the customer from such claims.

- c) The liability limits in section a) and b) do not apply for claims which have arisen through deceit on the part of the seller nor for liability for guaranteed properties or claims according to the product liability law and damages to life, limb or health.
- d) When the liability of the seller is limited or excluded then this is also applicable for all employees, representatives and auxiliary assistants of the seller

11. Applicable rights, place of judgement

- a) This GTCB and the entire legal relationship between customer and seller underlie the laws of the Republic of Germany (Bundesrepublik Deutschland). The UN Convention on Contracts for the International Sale of Goods is not applicable.
- b) Providing the customer is a merchant, juristic person of a public corporation or a civil servant then Waiblingen is the exclusive place of judgement for all conflicts which may arise resulting from this contract and or the relationship between customer and seller.
- c) In the case that one or more clauses in this GTCB be or become invalid this has no effect upon all other clauses contained in this GTCB.

Waiblingen, Germany, February 2017



DEMED Dental Medizintechnik e.K.

Nelkenweg 25, D-71336 Waiblingen

T +49 7151 270760

F +49 7151 270761

info@demed-online.de

www.demed-online.de